



FineTek Co., Ltd.

No.16, Tzuchiang St., Tucheng Industrial Park, New Taipei City 23678, Taiwan.
Tel: 886-2-22696789 Fax: 886-2-22686682
Email: info@fine-tek.com http://www.fine-tek.com

EPU Clamp-On Ultrasonic Flow Meter -Quick Start Guide-



01 Take Note Before Use

This guide provides basic information to help you get started. Please visit the website to download the full user manual for detailed installation and additional information. Incorrect operation may result in fatal or serious hazards.

Explosion hazard – If maintenance is required, the device must be removed from the hazardous area. To prevent ignition of flammable or combustible gases, disconnect the power supply before servicing.

Ensure that the installation of the equipment complies with the applicable national electrical code requirements. Installation of the equipment should only be performed by qualified personnel or factory representatives.



Note:

All junction box gaps must be completely sealed using sealing tape or sealant. Failure to seal all gaps may allow moisture to enter the equipment, potentially damaging internal components and voiding the warranty.

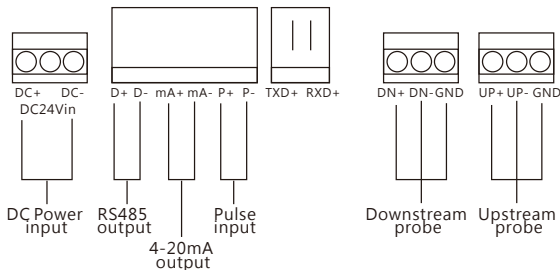
02 Power Supply & Signal Wiring

Input voltage: DC24V

Input current: 200mA±20%

Before each use, please follow the safety hint provided below:

The wiring shall be allowed for the transducer under the power outage status.

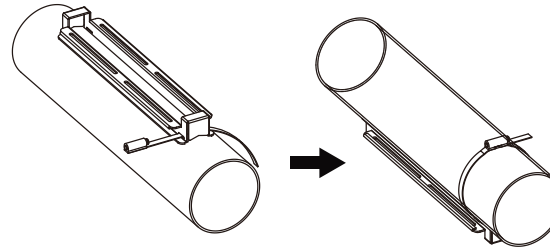


L(DC+)		N(DC-)		DC Power Input	
D+	D-	RS-485 Comm			
mA+	mA-	4-20mA output			
P+	P-	Voltage pulse output			
TXD+		RXD-		Reserved	
DN+	DN-	GND	UP+	UP-	GND
Red wire	White wire	Black wire	Red wire	White wire	Black wire

-Quick Start Guide-

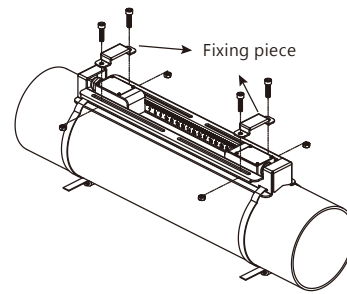
03 Installation

- ▶ Insert the tail end of the stainless steel clamp in the slot of the clamping apparatus and fixed it firmly. Pull the clamp tightly and pull the fixed head downward to fix the clamp temporarily. Then screw the clamp tightly using a flat-head screwdriver to fix the transducer bracket onto the pipe. (Figure 1).



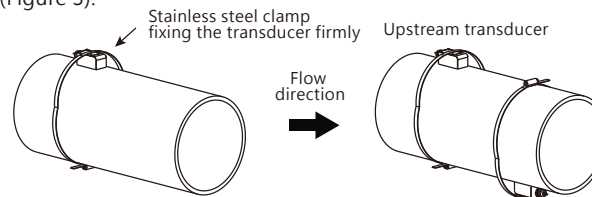
Fix Transducer Bracket(Figure 1)

- ▶ Attach the transducers to their respective brackets pursuant to the installation distance and fix the transducers using a fixing piece. Fixing one transducer and installing another one pursuant to the installation distance are recommended (Figure 2).



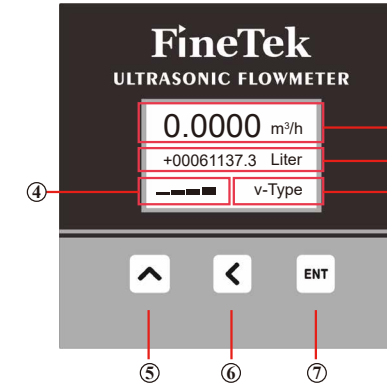
V-type installation (Figure 2)

- ▶ Install the upstream and downstream transducers to the direction of the liquid. Apply an appropriate amount of the coupling agent (G-40M) to the attaching surfaces of the ultrasonic transducers. Attach a transducer to the pipe and fix it tightly using the stainless steel clamps. Pull the clamp tightly and pull the fixed head downward to fix the clamp temporarily. Then screw the clamp tightly using a flat-head screwdriver to fix the transducer onto the pipe. Install another transducer pursuant to the installation distance. Fixing one transducer first is recommended (Figure 3).



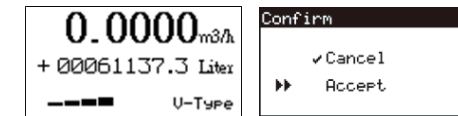
Z-type Installation (Figure 3)

04 Description of panel functions



- ① Instantaneous flow
- ② Total flow
- ③ Detection mode
- ④ Signal intensity
- ⑤ Number plus button
- ⑥ Left button/Return to the previous page
- ⑦ Confirm button (keep pressing)

05 Quick setup process

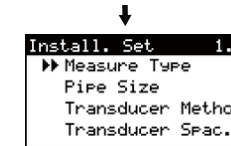


Measurement Screen

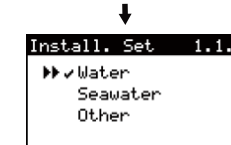
Press and hold ENT for 3 seconds to enter the operation confirmation menu. Press to confirm.



Press and hold ENT to enter the Main Menu. Select Installation Settings.



Press and hold ENT to enter the Liquid Type menu. Select Water, Seawater, or Other (manual sound velocity input required).



Press to move to the desired menu item. Press and hold ENT for 3 seconds to save the selection.



Select "Other"(1.1.3) by pressing press ENT to enter the sound velocity of the liquid. Others is selected for the liquid other than the first two options. If your select this option, you need to enter the sound velocity in liquid in the window under 1.1.3.1.