



PRODUCTS GUIDE

Instrumentation Solutions for Cement Industry



www.fine-tek.com



Solid / Liquid Level Measurement for Field Application
Pneumatic Vibrator/Air Hammer
Temperature Controller/ Counter /Digital Panel Meter

Your BEST Partner



Introduction

The cement industry which is part of the manufacturing sector has a relatively mature and stable development of technology. Its main production process involves mixing certain proportions of materials such as raw limestone, clay, silica and iron slag in a grinding mill and aggregating them into rawmix which is then transformed into clinker heated at high temperature inside a cement kiln. Gypsum added and ground into fine powder produce normal cement.

FineTek is a professional provider of level instruments for process automation and has more than 30 years of experience. We have strong R & D group and precise processing management with ISO9001 approval. We keep developing and supplying quality products to meet different market demands.

To meet food/sanitary industry requirement, our technology never stop. FineTek continue to develop and research new improve technology from tradition type to high end type. In order to improve, strengthen solution for food, beverage, pharmaceutical and biotechnology industry. We apply our experience to help our customers increase production efficiency, reduce labor hours, and minimize product loss. Our products also meet the PTB and ATEX standards.

Material level

Material level monitoring plays an important role in the cement industry. Barrels such as raw material barrels/clinker barrels and finished product barrels for raw materials/limestone storage silos/mineral slag warehouses require material level control and monitoring.

Others such as dust-precipitating systems and water treatment equipment use related industrial control sensors to carry out industrial automation. FineTek provides various material level detection sensors as well as a diverse range of product designs., No matter from on/off switch control to continuous signal output for inventory management , there are suitable products available.



Dust Monitoring

Power plant, Metallurgy, Chemical, Forging
Feed Mill, Cement, Pharmaceutical, Pulp & Paper
Rubber, Mining, Tobacco
Incinerator, Food processing, Wood processing
Monitoring emission of pollution source
Testing on the efficiency of dust collector for
improvement and optimization
Monitoring dust concentration in pipe and chimney



Capacitance Level Switch

In a grate cooler - burning system/heat recovery device, the temperature of the clinker inside the kiln can reach 500-700°C. With our super-high temperature material level switch type, can fit the installation requirement and is also the best solution.



Rotary Paddle Level Switch

The product is used in raw material/clinker silos and dust-precipitating systems. The rotary paddle level switch uses a transmission shaft connected to clutch. The motor operates normally when it does not touch the material. It stops rotating when the paddle touches the material. The mechanism gives a contact signal to measure the level of the material.



RF-Capacitance/Admittance Level Switch

It is used in raw material/clinker and slag warehouses. The product is designed with a switchable FSL-FSH protection function, adjustable time delay function and sensitivity adjustment. It comes in different types and can be used at high temperature, for mixing or in narrow spaces.



Radar wave level gauge

It is commonly used in large raw material/clinker and finished product warehouses. It is a non-contact radar level sensor with simple installation and easy maintenance. It can be used at high temperatures and in high pressured tanks as well as measuring highly corrosive materials. It is extremely precise and widely used.



Dust collection valve & Conveyor safety switch

Programmable Sequence Controller

In a dust-collecting equipment, the AE circuit board is used for opening pilot solenoid valves and controlling the diaphragm valves when blowing and collecting dust.

The dust removal system is used for collecting dust and impurities from the air, thus reducing air pollution.



Diaphragm Valve for Dust Collector

It is used in bag filter of grinding equipment for collecting dust.

The diaphragm valve is structurally designed to allow rapid airflow from the diaphragm valve to the opened cotton filter bag. Further to shake off residual dust and prevents the dust exposed in the air and causing air pollution.



Conveyor Safety Switch

In case of emergencies relating to the conveyor equipment, pulling a steel wire rope which is along the conveyer on site, steel wire will activate SRS pull cord switch to shut down the power of equipments.

SRT is used for detecting torsion in the conveyor belt and deviation from the chassis centerline due to overloading.



Level

Magnetic Float Level Switch

It is used for on-site water treatment equipment systems and humidifying towers.

The magnetic float level switch uses a magnet inside the float to activate the reed switch inside the stem to occur an on/ off switching action for controlling liquid level.



Ultrasonic Liquid Level Transmitter

It is used for on-site water treatment systems. reflected waves return to the sensor head when ultrasonic waves reach the material's surface. The reflected wave is converted into electrical signals and sent to an ultrasonic controller. The reflection transfer time of the sound waves is calculated and converted to material level or distance.



Cable Float Level Switch

Apply to the natural water, wastewater, unknown liquids and well reservoirs. Contact capacity up to 10A/250Vac. You can also do multi-level control float material available with plastic and stainless steel micro switch, reed switch and mercury switch available simple installation and durable.



Cement plant process flow drawing (phase 2)

-  Powder/ Solid Level Transmitter

 Liquid Level Transmitter

 Powder/ Solid Level Switch

 Conveyor Belt Safety Device
-  Float Level Switch

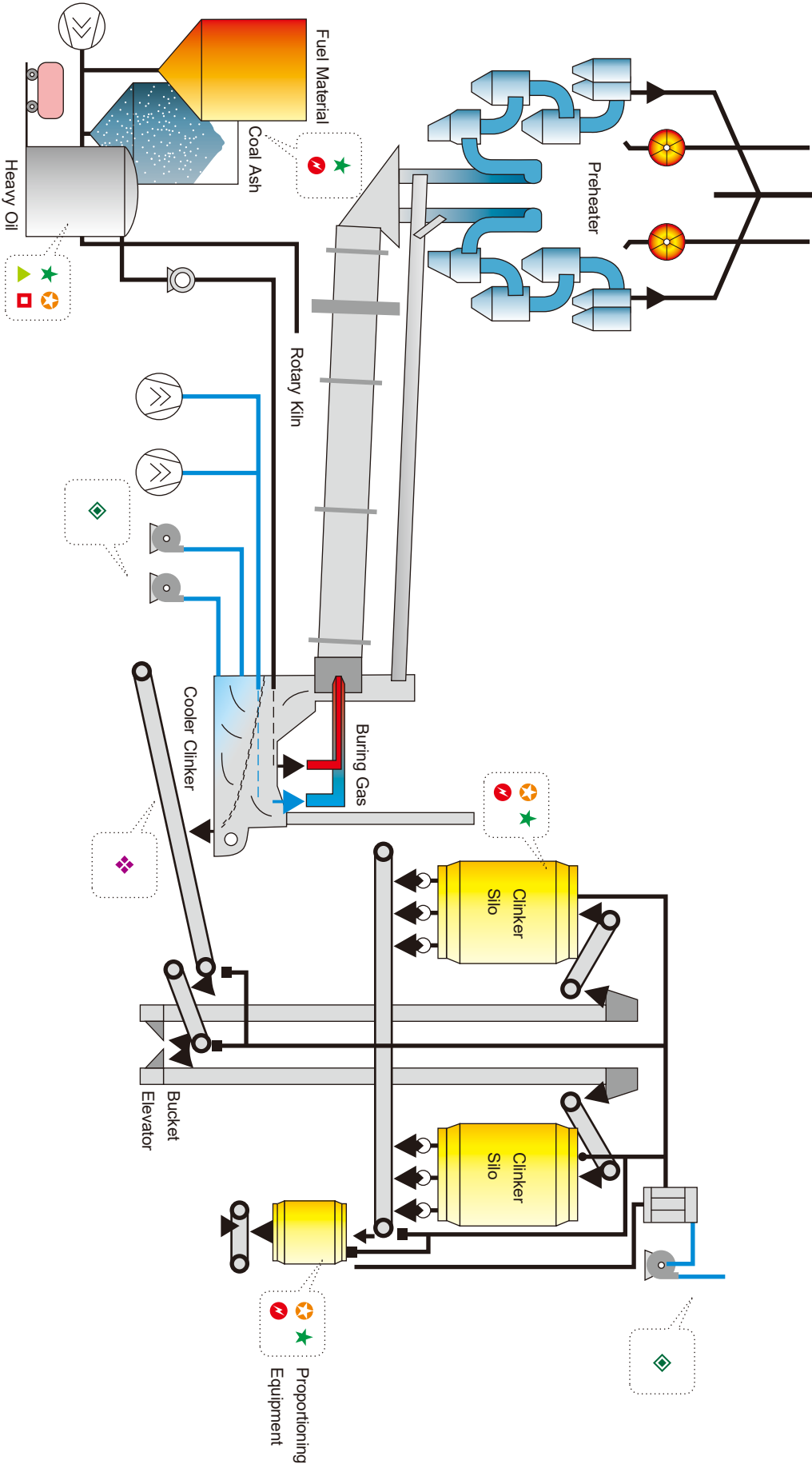
 Bridge Break

 Dust Collector Equipment
-  FAB FDX FFX

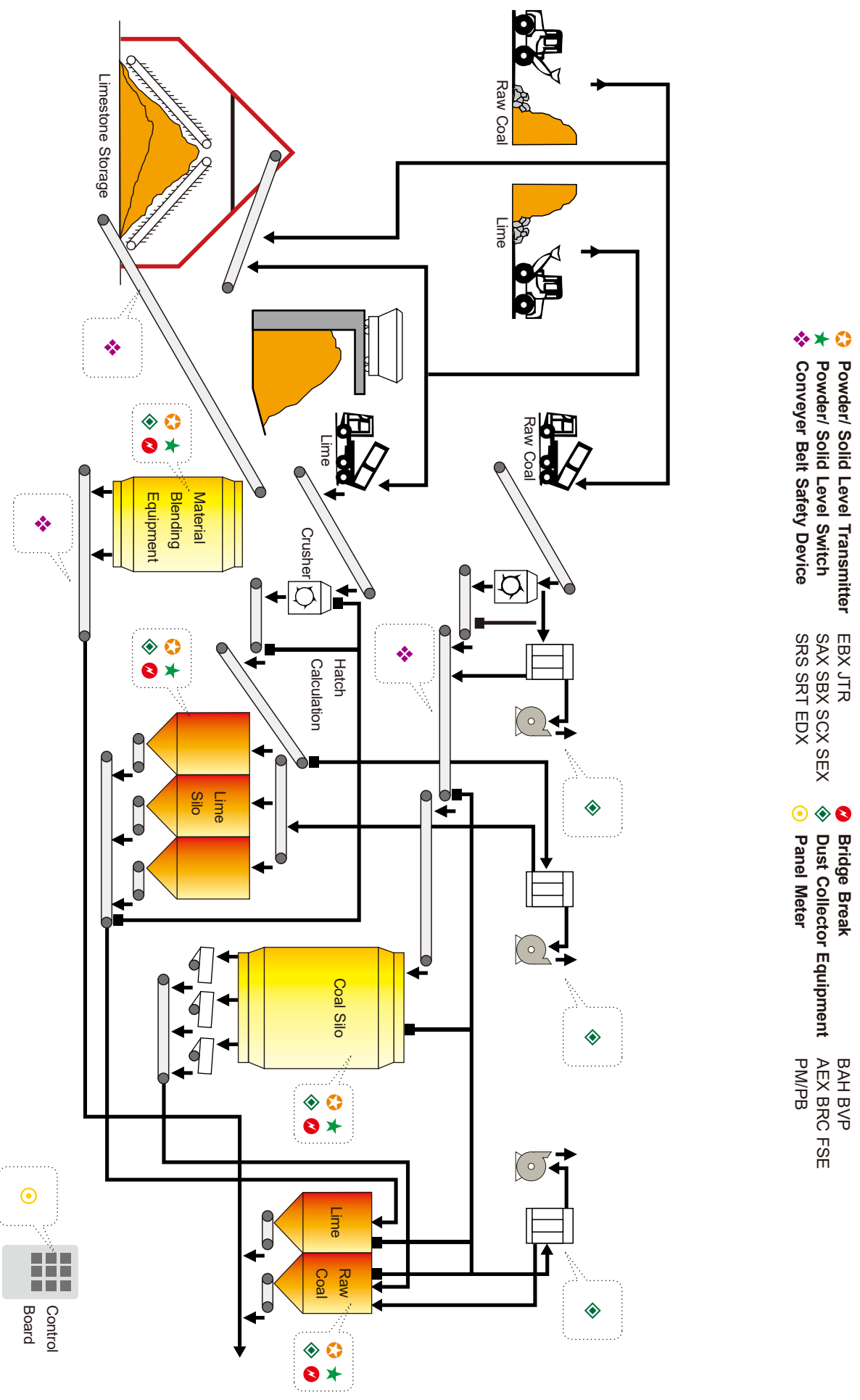
 BAH BVP

 AEX BRC FSE

Cement plant process flow drawing (phase 2)



Cement plant process flow drawing (phase 1)



FSE720 Dust monitoring

OPERATING PRINCIPLE

The measurement of FSE720 dust monitoring system is based on triboelectric effect. When dusts (particles) collide with sensing probe, they are charged in natural way. The probe would detect charged particles, enlarge signal, analyze, and further processing.

FEATURES

- Principle in triboelectric, lower maintenance fee compares to optical dust sensor
- Continually reliable monitoring
- Easy installation
- Measure particle size 0.3µm or bigger
- Won't be affected by vibration, vapor, nor viscosity
- Remote calibration is available
- Protection class IP67 (depends on electrical cable)
- Improve production condition and environment

SPECIFICATIONS

Power supply	18~32Vdc / 90~240Vac
Ambient temp.	-20°C~85°C
Process temp.	-40°C~150°C, -40°C~200°C
Pressure	Max. 2Bar
Output	Relay *2: SPDT : 240Vac 5A ; 30Vdc / 1A
Connection	1/2"PT or 1/2"NPT
Protection rating	IP67
Consumption	80mA@24Vdc
Enclosure material	Aluminum alloy
Probe material	SUS304/ SUS316/ SUS316L
Isolated material	PEEK

* Please refer to completed specifications in single catalogue for this product



JFR483 Radar wave level gauge

OPERATING PRINCIPLE

The radar level gauge transmits a continuous radar wave signal from the antenna. This signal is a frequency-modulated continuous wave (FMCW). There is a frequency difference between the continuous wave emitted from the radar level gauge antenna and the echo returned from the surface of the object. The frequency difference is proportional to the distance between the antenna and the surface of the object. After receiving the echo, the electronic components are processed using a unique high-precision algorithm, the Fast Fourier Transform (FFT), which enables the instrument to accurately measure the height of the liquid level.

SPECIFICATIONS

Medium	Solids
Measurement range	35m/85m
Frequency	80GHz
Power supply	24VDC
Power consumption	Max.0.54W
Blind spot	0.15m/0.2m
Resolution	1.6 uA
Accuracy	±1mm
Analog output	4-20mA
Beam angle	3°
Operating temp. range	-40~120°C
Operating pressure	Atmospheric pressure
Antenna material	φ75mm PTFE
Fault output	20.5mA ; 22mA ; 3.9mA
Damping time	0~100s adjustable
Cover material	Aluminum /IP67
Cable inlet	M20*1.5 (cable outer diameter: 6~9mm) Blind plug 20*1.5
Weight	4kg

* Please refer to completed specifications in single catalogue for this product

FEATURES

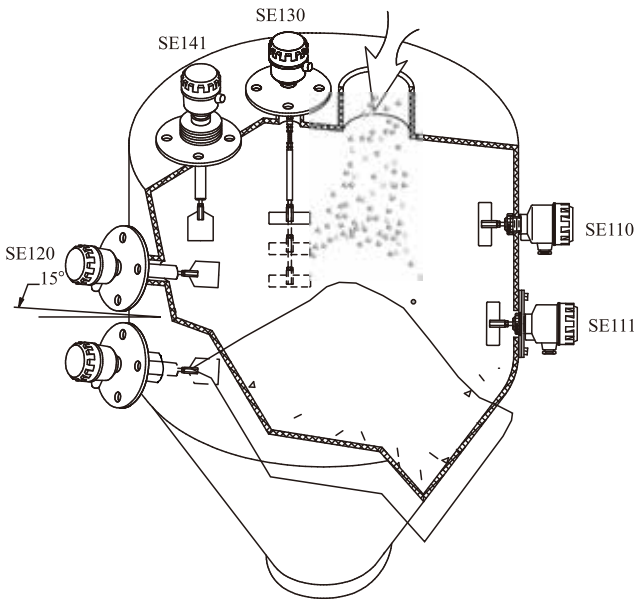
- Non-contact measurement, no wear and tear, and no pollution.
- Small antenna size, easy to install.
- Short wavelength, reflects well on inclined surfaces.
- The measurement blind spot is small, therefore particularly effective on the measurement of small storage tanks.
- The beam angle is small, the energy is concentrated, and the echo ability is enhanced, making it conducive in avoiding interfering objects.
- Unaffected by temperature and pressure changes.
- The real level echo can also be accurately read in a dusty environment.
- High signal-to-noise ratio, even in the case of fluctuations.
- The 80GHz frequency is the best choice for measuring solid and low dielectric constant media, achieved with the medium under test.
- Measurement of material working conditions with electrical constant ≥ 1.8 .



SEX Rotary paddle level switch

OPERATING PRINCIPLE

The paddle rotation is impeded by material, surrounding the paddle, motor will stall and cause the Micro-Switch to change state. (including an alarm or control)



FEATURES

- Airtight sealing device, outdoor application is available
- High safety dust protection
- The torque force is adjustable
- The performance of torsion is stable and reliable
- If the rotary paddle bears an extra overload the motor will be appeared slide to prevent the inside mechanism damaged
- Easy maintenance
- SE380 design with adjustable torque to fit wide density range

SUITABLE APPLICATION

Raw materials (cereals, grain) feeding silo, ready-mixed storage silo, end product storage silo

SPECIFICATIONS

Power	(A)110Va, (B)220Vac, (C) 240Vac, (D) 24Vac, (E) 24Vdc
Operating temp.	20~70°C (Max. 200°C)
Power consumption	3W, 11W (DC 24V)
Contact capacity	SPDT 5A/250Vac (Std) or 3A/250Vac
Connection	1"PF, JIS 2-1/2"x5 Kg/cm ² (other types are optional)
Housing	IP65 aluminum
Conduit	1/2" PF
Ex-proof cert.	IECEEx, TS, ATEX, NEPSI (optional)

* Please refer to completed specifications in single catalogue for this product



SAX Capacitance level switch

OPERATING PRINCIPLE

Capacitance switch relay on electrical capacitance theory (the ability of a medium to store electrical energy). When an electrical has two separated conductive plates, the space between the plates acts as a capacitor and stores the electrical energy.

SUITABLE APPLICATION

Raw materials (cereals, grain) feeding silo, ready-mixed storage silo, end product storage silo

SPECIFICATIONS

Power	110~240Vac $\pm 10\%$ or 24Vdc $\pm 20\%$
Output rating	SPDT 5A/250Vac/30Vdc, NPN transistor output
Sensing probe material	SUS304/316, PP, PVDF coating
Connection	1"PT JIS 1-1/2"x5 Kg/cm ² (other types are optional)
Operating temp.	-20~80°C (Max. 800°C)
Insulated material	UPE, PEEK, Ceramic.
Housing	IP65 aluminum
Sensitivity range	10pF (Std)
Delay time setting	0~6 sec
Ex-proof cert.	Ex dia IIC (optional)

* Please refer to completed specifications in single catalogue for this product

FEATURES

- As Capacitance Level Switch has no moving parts inside the device, it will not be affected by friction. It is suitable for powder or liquid application easy to install. The customer can choose the types for his requirements.

1. **Standard Type (SA110 & SA111)**
Suitable for general use.
2. **Hi-Temp Type (SA120 & SA128)**
Suitable for high temperature environment.
3. **Anti-Corrosion Type (SA130 & SA132)**
Suitable for corrosive environment.
4. **Remote Probe Type (SA140)**
For use with vibrator equipped with tank.
5. **Wire-Probe Type (SA150)**
Suitable for silo or large-size tank.
6. **Plate-Probe Type (SA160)**
Suitable for granules and at lower position of tank side.
7. **Explosion-Proof Type (SA270 ~ SA278)**
Ex dia IIC T4~T6, DIP A21 T_A, T3~T6
8. **Explosion-Proof Type (SA370 ~ SA378)**
Ex ia IIC T3~T6
Equipped with SA-75U signal conditioner can be used in hazardous areas.



SBX RF-Capacitance / Admittance level switch

OPERATING PRINCIPLE

When medium contacts with measuring electrode, the admittance between measuring electrode and ground electrode will be increased, by the variation of admittance, medium level can be determined. Between the measuring and ground electrodes, the signal wave of shielding electrode is exactly the same with the wave of measuring electrode, but both signal waves are completely isolated. Thus, it can prevent the variation of admittance of probe and GND which was caused when medium attaches to the electrode. This can ensure the level switch only sense the admittance between measuring electrode and tank wall which can eliminate the false alarm caused by medium attached to the probe.

FEATURES

- It is not affected by material adhesion.
- It is easy to install and adjust.
- It has good stability and not affected by temperature.
- It's with delay time function, 0-30s
- IP65 protection
- DPDT, 5A/250Vac contact output
- Maximum operating temperature of 550°C (450°C for explosion proof type)
- Switchable high/low level fail safe protection alarm function
- Suitable for measuring liquid, viscous liquid, solid, granules and etc.
- Simulation alarm test function
- Explosion Proof Ex d IIB T1~T6 (SB17 series)

SPECIFICATIONS

Housing	Aluminum alloy baking varnish (IP5)
Probe material	SUS304 or 316
Insulation material	PTFE or ceramic
Connection	3/4" / 1"PT (other specification can be customized)
Sensitivity	0.3PF
Power supply	24Vdc±20% or 115/230Vac±10%, 50/60Hz
Power consumption	Max. 2 W
Output contact	5A/250Vac, DPDT
Operating temperature	-40~150°C/550°C
Delay Time Setting	0-30s
Fail Safe Alarm	Low or high (switchable)
Cable gland	1/2"NPTx2
Operating pressure	ATM~ 20kg/cm ²

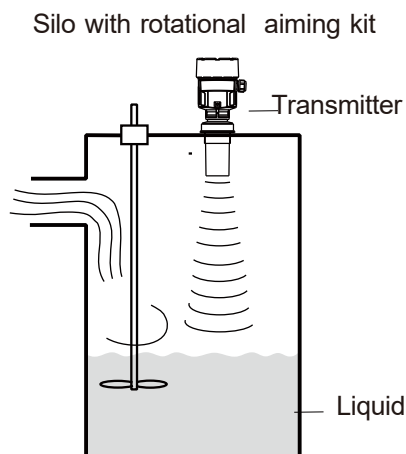
* Please refer to completed specifications in single catalogue for this product



EAX4 Ultrasonic level transmitter

OPERATING PRINCIPLE

The ultrasonic level transmitter is a non-contact, low-cost and easy-to-install measuring device. It can be applied to most industrial applications for liquids. Most important aspect of is that it is easy-to-install and low maintenance due to no moving parts.



FEATURES

- 4~20mA two-wire output.
 - 24Vdc power supply.
 - Casing protection IP67.
 - With integrated structure.
 - Probe material PVDF.
 - False echo detection.
 - 2"connection.
 - Non-contact measurement. Easy installation.
 - Fully isolated analog output.
 - With temperature compensation feature, which can improve measurement accuracy.
 - Beam angle: 5°
 - Not affected by liquid temperature, S.G, viscosity
- Maximum measurement range 8m (26 ft).

SPECIFICATIONS

Frequency	50KHz
Operating Voltage	24VDC
Communications	4~20mA
Blanking Distance	300mm
Maxi. Range	8m
Resolution	1mm
Accuracy	±0.25%(full scale)
Operating Temperature	-40~80°C
Beam Angle	5°
Max. Operating Pressure	<0.1MPa
Typical Weight	1.4kg

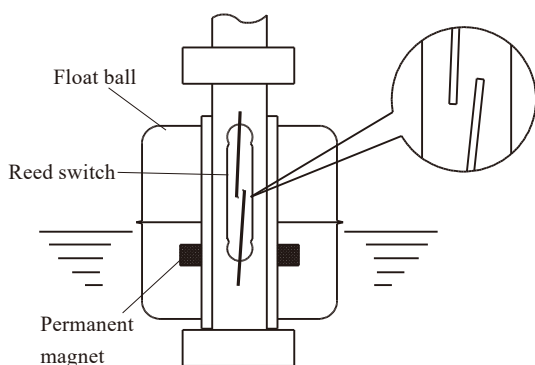
* Please refer to completed specifications in single catalogue for this product



FDX Magnetic float level switch

OPERATING PRINCIPLE

The single unit or multiple reed switch units are housed tightly in stainless steel or engineering plastic stem, and the permanent magnet is sealed into the middle of the specified float Ball(s). You can mount the float ball to penetrating through the stem, then the liquid buoyancy will deliver the float ball up and down at the specified Position by graduating rings.



FEATURES

- Adjustable switch with manual reset mode
- Easy to install on the terminal or at both ends of the conveyor belt
- Die cast ADC enclosure. Good air tight characteristics. IP67 protection level.
- Alarm & shutdown signal output: The pull switch lever moves 30 degree
- There is quick response at any position of the cable.



SPECIFICATIONS

Material	PVDF / PP / SUS304 / SUS316
Operating temperature	< 200°C
Contact	SPST-NO / SPST-NC / SPDT
Contact rating	10W / 20W / 50W
S.G. of float	> 0.5 (relative to water)
Operating pressure	Maximum: 50 Bar
IP rating	IP65
Explosion proof	ATEX 2G Ex d IIB T6~T3 Gb (optional)

* Please refer to completed specifications in single catalogue for this product

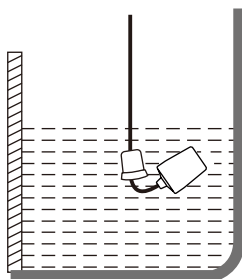
FAB Cable float level switch

OPERATING PRINCIPLE

The Cable Float Level Switch is a structured by using either micro switches proximity switches or reed switches to control the contact. It's user-friendly design is ideal for level measurement. The switches will transmit an ON or OFF contact signal output when the float rises and turns upwards. The switch contains a metal ball that can slide as the float position changes.

For different water or solution temperatures, different float materials are available for selection. Plastic and stainless steel switches are the most common.

The cable float level switch can not only can be used in clear liquids but also can be used in granular liquids. Long distance detection points and multi-point contacts are also available. Cable float level switches can be applied in All water management, petrochemical, chemical industries. Other uses include: air-conditioner systems, drainage systems, most tanks or containers with level switch requirements.



FEATURES

- Suitable for long-distance, multi-level control,
- Shen pumps or containing particulate / liquid control of the bulk impurities.
- Has the best environmental tolerance, easy to replace, and cheap.



SPECIFICATIONS

Float material	PVC / PP / SUS304
Operating temperature	60°C / 70°C / 170°C(Optional)
Contact form	SPST-NO / SPST-NC /SPDT
Contact capacity	10A/250Vac or 15A/250Vac
Actuation angle	28°±2°, 10°±2°
Pressure	2kg/cm ²
Wire voltage	600Vac
Isolation resistance	>100MΩ

* Please refer to completed specifications in single catalogue for this product

AEX6 Programmable sequential controller

OPERATING PRINCIPLE

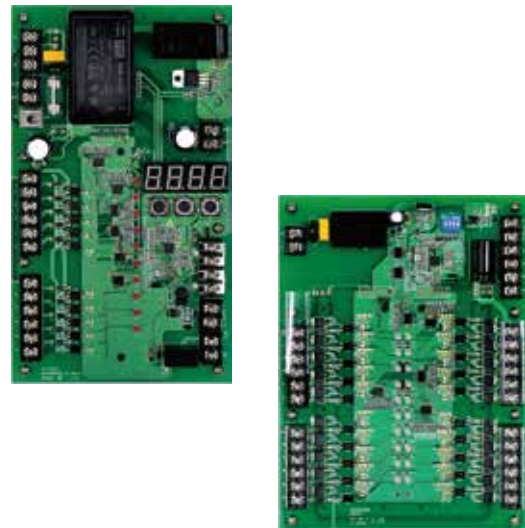
Programmable Sequence Controller AEX6 is specifically designed for use with pneumatic dust collector systems. It comprises of a micro-processor and a logic analysis & control circuit, with an output of 10, 20 points (up to 620 points with an expansion board) to control the solenoid of the diaphragm valve which in turn controls the pulse jet sequence of the valves, thus achieving the dust collector's main objective of cleaning the bag filter. The LED display panel indicates the current pulse jet position. Pulse Jet time and interval time can be adjusted. The number of control points can also be adjusted and increased. Wide application range, with user-friendly operation.

It has an external current input terminal, which can be connected to a differential pressure transmitter or used for dust concentration detection. When the current reaches the set value, the fabric bag is attached to a greater degree, and the pulse jet interval is automatically shortened to improve the efficiency of bag cleaning. Continuous low current indicates that the fabric bag has broken and pressure has reduced. A built-in relay contact can be used as an alarm output.

FEATURES

- Digital display for easy operation and real time control of operation status.
- Microprocessor control accurate and precise operation.
- Remote control function convenient to start and stop operations.
- Able to automatically execute pulse jet cycle even after system shuts down, therefore preventing clogging caused by damp and dust residue in the fabric bag.
- Number of output points can be increased up to 620 points.
- It can be connected to 4~20mA input (differential pressure or dust detection) when the set value is reached.

Interval time is automatically shortened to improve performance, with a Relay output to warn when the fabric bag is broken.



SPECIFICATIONS

Voltage	100/240Vac, $\pm 10\%$ 50Hz/60Hz
Power consumption	3VA (excluding the output load)
Ambient temp.	-20~70°C
Pulse Jet time	10ms~9900ms
Pulse Jet interval	1~999 seconds
Shutdown cycle function	Yes
Remote control function	Yes
4~20mA input	Yes
Alarm output contact	SPST 3A 250Vac/24Vdc
Number of output points	Mother board -10, 20 and maximum expandable 620
External box	210x290x100 box ABS/cover PC.

* Please refer to completed specifications in single catalogue for this product

BRC Diaphragm valve

OPERATING PRINCIPLE

The diaphragm valves are used specifically in the dust collector system. The valve consists of 2 air chambers divided by a piece of diaphragm. The 2 chambers are connected through an air passage (air passage's diameter is smaller than the orifice of the pilot valve). When the orifice opens, the air in the upper chamber is exhausted much faster than the speed of air that enters through the air passage. The air pressure of the upper chamber drops significantly, the higher pressure of the lower chamber pushes the diaphragm up and opens a bigger passage for air to enter into the bottom chamber.

This sudden burst of air is used to inflate the fabric filter so as to shake off all the dust clinging on the bag filter. When the orifice closes, the pressure in both chambers equalizes and the diaphragm returns to its original position via the force of the coiled spring.

FEATURES

- Fast response, large flow volume, effective cleaning action on fabric filter
- Low air consumption
- Compatible with programmable sequential controller
- Ease of adjustment in jet pulse timing and duration



SPECIFICATIONS

Power	24Vdc \pm 10%, 110/220Vac, \pm 20% 50/60Hz DIN Optional for DIN connector or lead wire
Suitable fluid	Air
Body material	Aluminum
Diaphragm material	Engineering plastic or NBR
Operating temp .	-20~85°C
Ambient temp .	-20~60°C

* Please refer to completed specifications in single catalogue for this product

SRT Conveyor belt misalignment switch

OPERATING PRINCIPLE

It is used for detecting torsion in the conveyor belt and the belt misalignment from the chassis centerline due to overloading. It can effectively prevent the medium from falling out, equipment failure due to overloading, or human injuries. During operation, misalignment of the conveyor belt may be occurred due to overloading, belt shifting or torsion which the belt presses the roller lever to trigger the micro switch and generate alarm signal. Alarm signal output: The roller lever moves 20 degree vertically. Shut-down signal output: The roller lever moves 35 degree vertically.

FEATURES

- The roller lever can move up to max. 75 degrees bi-directionally. The internal torque spring will be automatically reset.
- Die cast ADC enclosure. Good air tight characteristics. IP67 protection level.
- Alarm signal output: The roller lever moves 20 degree vertically. Shut-down signal output: The roller lever moves 35 degree vertically.
- Trigger point of alarm and shutdown is controlled by precision mechanical design.
- Special action angle is optional by customization.
- It can prevent downtime and product loss caused by failure of the conveyor system, as well as avoiding additional cost in replacing conveyor belt.
- Easy installation, fast performance

SPECIFICATIONS

Contact rating	15A 250Vac, SPDT or SPDTx2 10A 125Vdc, SPDT or SPDTx2 10A 125Vac / 250Vdc, DPDT or DPDTx2
Action Force	3.4~5.4N.m (0.35~0.55kgf.m)
Reset mode	Manual reset
Ambient temperature	-20~60°C
IP rating	IP67
Enclosure material	Die cast ADC
Weight	About 2.9kg

* Please refer to completed specifications in single catalogue for this product



SRS Safety cable pull switch

OPERATING PRINCIPLE

Belt conveyor safety cable pull switches are designed for providing a switching system to isolate the power to conveyor system and other equivalent process equipment in the emergency condition °

The cable pull switches are actuated by a plastic coated steel wire, which are placed along-side the conveyor ° When you pull on the cable at any point, it will trip and automatically lock the switches, deenergizing the conveyor starter contactor °

Each switch is bi-directional in operation and has two cable fitted to it from opposite directions terminated with a spring at the anchor points, please see drawing 4 the springs will operate the switch on cable breakage °

After tripping the mechanical latch can be released only on the switch itself by the reset lever °

FEATURES

- Universal design for bi-direction activation
- Compact design for tight-fit areas, IP67 rugged die cast aluminum housing
- Manual reset lever
- Easily orientated at either end or intermediate position in pull cable run
- Cable Pull 30° for shutting down system
- Highly visible black arm easily shows condition of the switch, indicating alarm or normal
- SRS-170, Explosion-proof

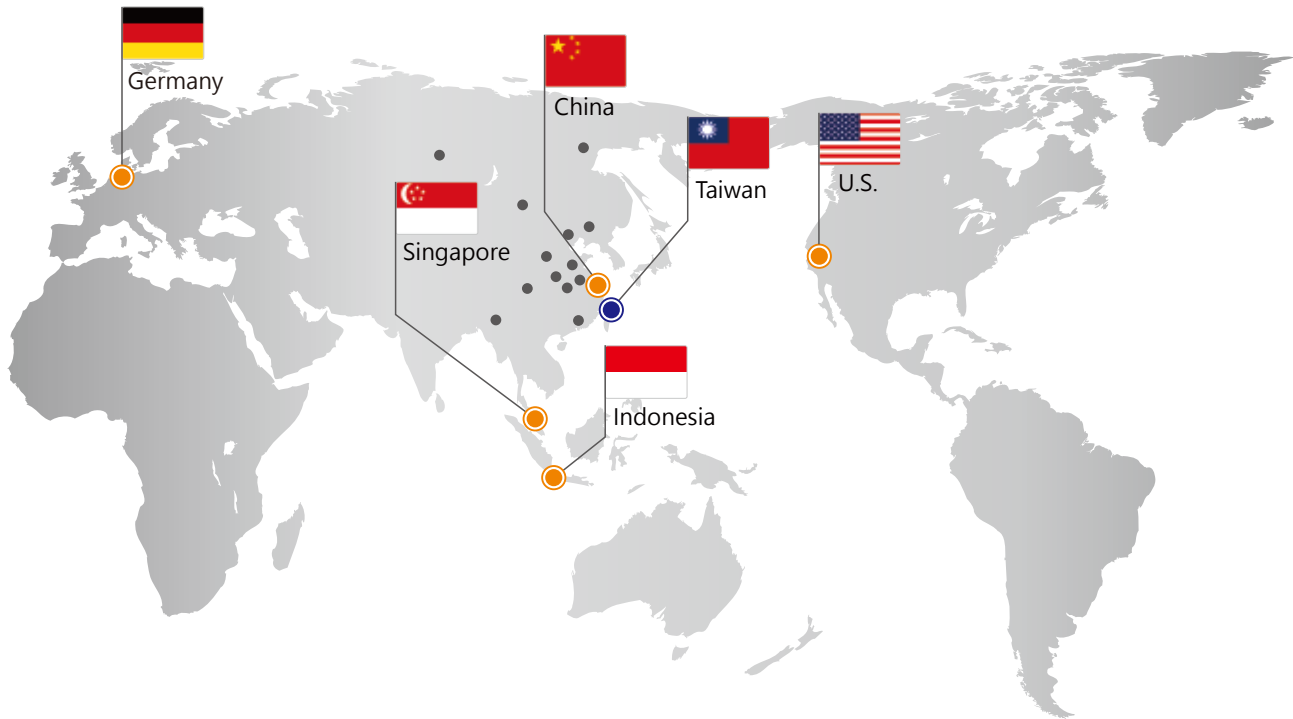


SPECIFICATIONS

Contact rating	15A 250Vac, SPDT or SPDTx2 10A 125Vdc, SPDT or SPDTx2 10A 125Vac / 250Vdc, DPDT or DPDTx2
Action Force	49±9.8n (5±1kgf.m)
Reset mode	Manual reset
Ambient temperature	-20~60°C
IP rating	IP67
Enclosure material	Die cast ADC
Weight	About 2.9kg

* Please refer to completed specifications in single catalogue for this product

Global Network



■ Head Quarter

● Taiwan

FineTek Co., Ltd. - Taipei Head Quarter
No.16, Tzuchiang St., Tucheng Industrial Park
New Taipei City 236, Taiwan
TEL: 886-2-2269-6789
FAX: 886-2-2268-6682
EMAIL: info@fine-tek.com



■ North America

● California, U.S.

Aplus Finetek Sensor Inc. - US Office
355 S. Lemon Ave, Suite D
Walnut, CA 91789
TEL: 1 909 598 2488
FAX: 1 909 598 3188
EMAIL: info@aplusfine.com

■ Europe

● Germany

FineTek GmbH - Germany Office
Bei den Kämpen 26
21220 Seevetal-Ramelsloh, Germany
TEL: +49-(0)4185-8083-12
FAX: +49-(0)4185-8083-80
EMAIL: info@fine-tek.de

■ Asia

● China

Fine automation Co., Ltd. - Shanghai Factory
No.451 DuHui Rd, MinHang District, Shanghai,
China 201109
TEL: 86-21-6490-7260
EMAIL: info.sh@fine-tek.com



● Singapore

FineTek Pte Ltd. - Singapore Office
37 Kaki Bukit Place, Level 4 Singapore 416215
TEL: 65-6452-6340
EMAIL: info.sg@fine-tek.com

● Indonesia

PT. FineTek Automation Indonesia - Indonesia Office
PERGUDANGAN TUNAS BITUNG
Jl. Raya Serang KM. 13,8, Blok C3 No. 12&15,
Bitung Cikupa, Tangerang 15710
TEL: 62 (021)-2958-1688
EMAIL: info.id@fine-tek.com



Distributor: