

TAB-2110 Operation Manual



Thank you for purchasing FineTek product.
Please read the user manual before operating
and keep this manual as future reference.

FineTek Co., Ltd.

No.16, Tzuchiang St., Tucheng Industrial Park, New Taipei City 23678, Taiwan.
Tel: 886-2-22696789 Fax: 886-2-22686682
Email: info@fine-tek.com http://www.fine-tek.com

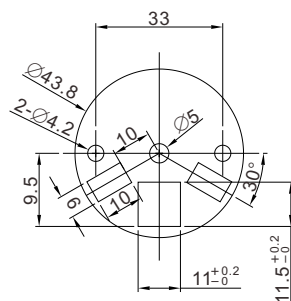


08-TAB01-B0-EM,06/15/2012

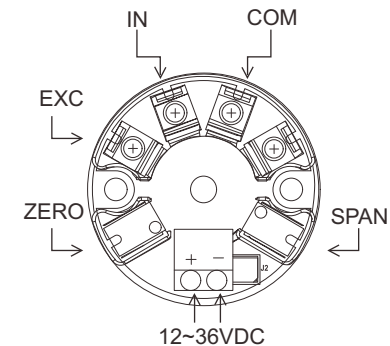


Specification

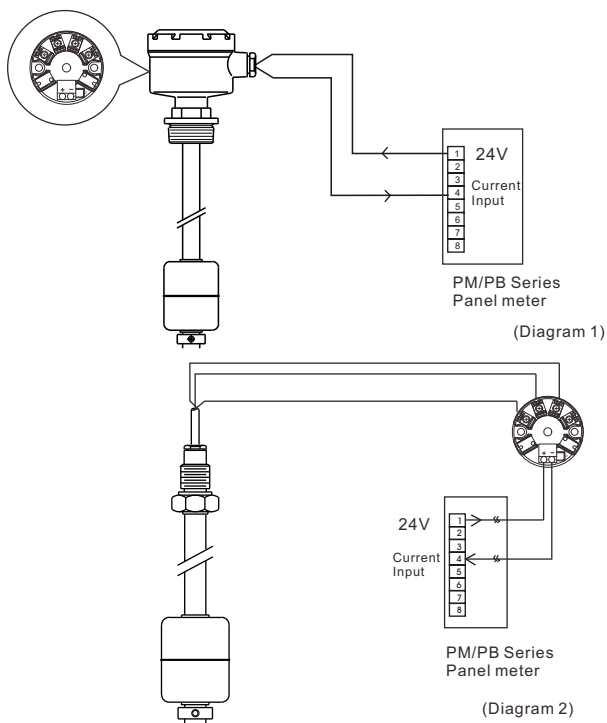
Voltage Supply	Loop power 12~36VDC
Output Current	4~20mA
Load Resistance	$R_L(\text{Max})=50(V_s-8)$
Operation Temperature	-40°C~80°C
Ambient Humidity	0~80% RH
Accuracy	$\pm 0.1\% (25^\circ\text{C})$
Temperature Effect	0.01% FS./°C
Adjustment Range	Zero Ajustment 5% FS Span Ajustment 20% FS



Terminal Wiring Diagram



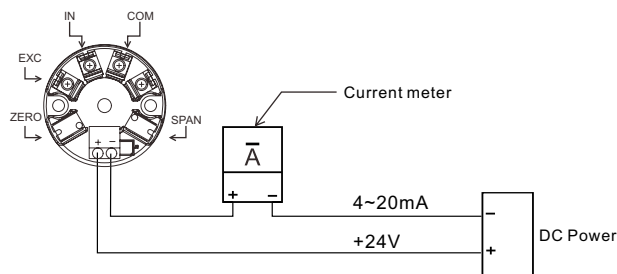
Float Level Transducer Wiring Diagram



Calibration Procedure

Calibration is done for all level transducers before sale.
Customers do not need to perform calibration.
If it is needed to be done in any case, please follow
procedures below:

- 1.Connect a current meter with 24Vdc power.
See diagram below.
- 2.Remove float ball to the lowest position, and adjust
"zero" until current meter indicates 4mA.
- 3.Remove float ball to the highest position, and adjust
"Span" until current meter indicates 20mA.
- 4.Repeat step 2 and 3 until the best 4-20mA setting is
done.
- 5.Calibration procedure is to be used for two-wire
calibration only.



Trouble Shooting

- 1.Make sure wiring, voltage, terminal plugs and
load resistance are proper.
- 2.When float ball is positioned in the lowest level
current meter must show 4mA and 20mA in the
highest level. See diagram 1 below.
- 3.If product is still not functioning properly, please
return to the manufacture for repair.
- 4.Over-range transmission and instrument internal
resistance will influence 4-20mA output signaling.
When resistance increases, please refer to diagram
2 for power supply adjustment.

