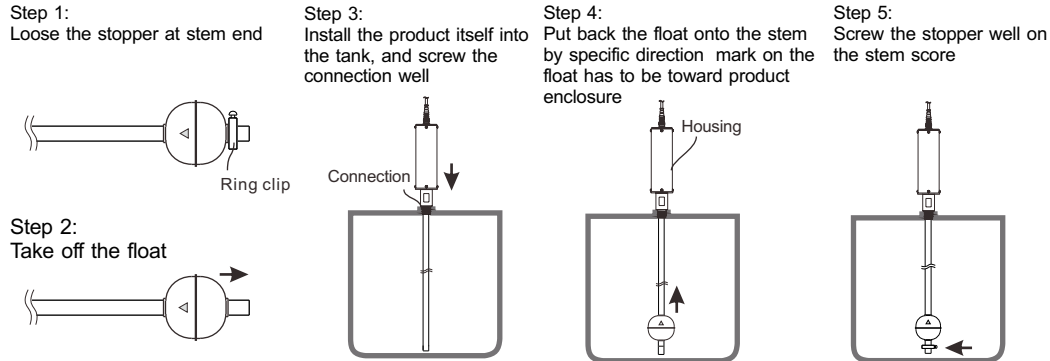


# EG3 Magnetostrictive Level Transmitter Operation Manual

## INSTALLATION RECOMMENDATION

1. Power supply 24Vdc±20%.
2. Please do not change magnetic float to avoid effect on measurement accuracy.
3. User can install the product directly without having to take off the float, when connection hole at site is bigger than float diameter.
4. Please take off the float before installation, when connection hole at site is smaller than float diameter.
5. Please install the float by specific direction (mark on the float has to be toward the product enclosure).
6. The stopper has to be fixed well on the stem score.
7. Please do not drop the magnetic float, to avoid magnet breakage inside the float.
8. Do not pressure the product with heavy weight, to bend the stem. If the stem is bent and can not work, please send back to us for calibration.
9. Package by bubble bag or foam is necessary to ensure safety during transportation.
10. Please do not open the product enclosure to assure measurement accuracy.

## INSTALLATION METHOD IF THE FLOAT HAS TO BE TAKEN OFF BEFORE INSTALLATION:



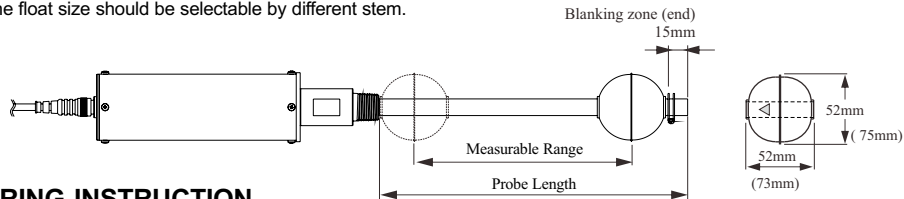
## DETERMINE THE LENGTH DURING ORDERING INSTRUCTION

Please refer below diagram for actual length of stem and the measurable length of the stem:

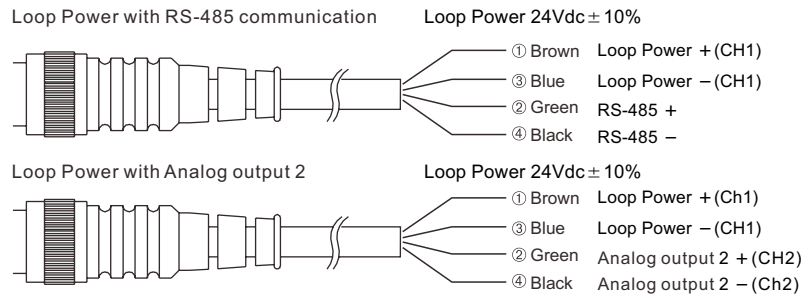
Probe length = Measuring range + (Single Float Height + 15mm)

Ex: 500mm (Measurement) + (73mm (S5 Float Height) + 15mm) = 588mm (Probe length)

※ The float size should be selectable by different stem.

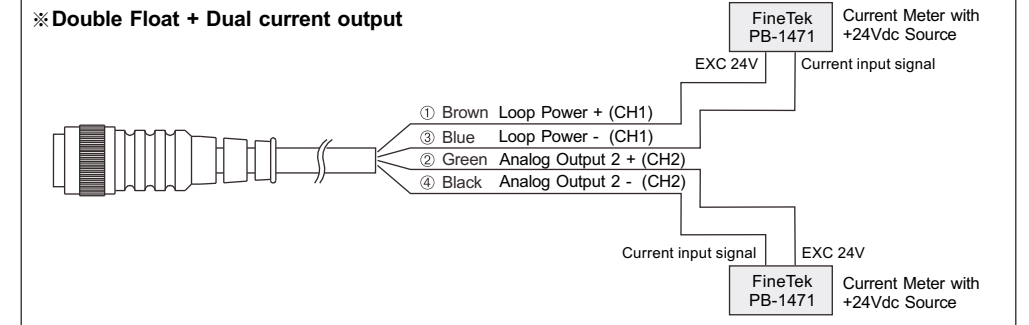
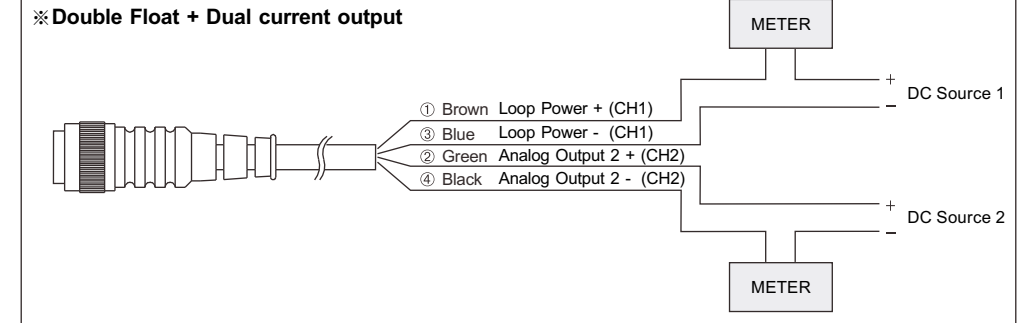
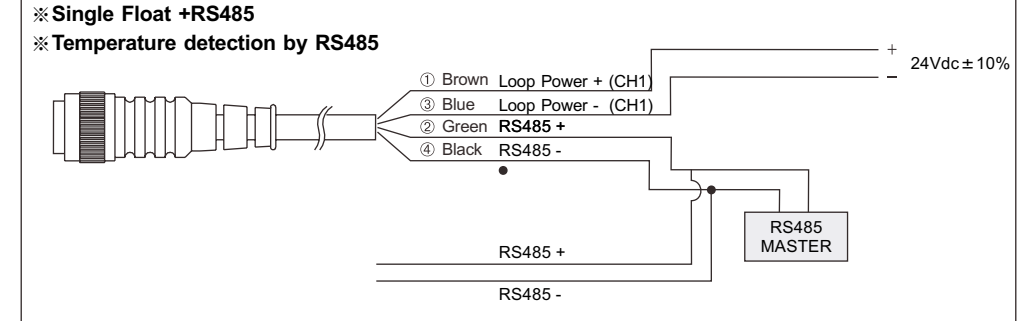


## WIRING INSTRUCTION



- \* When RS-485 is available, analog output 2 is not available.
- \* Only two core cable; when order without RS-485 and analog 2 output.

## SCHEMATIC



## WARRANTY:

Warranty 12 months after delivery. No fee such as testing, parts and maintenance will be charged in warranty. Any flaws caused by delivery can be filed to us within 7 days given related evidence.

We will be responsible for repair or replacement.

Please send back the whole unit to us and pack well to prevent break-down during delivery.

The following will be charged:

1. Out of warranty
2. Do not follow operation instruction in manual, or over product spec as indicated in catalogue.
3. Any cause by force majeure such as flood, earthquake, typhoon etc.



**FineTek Co., Ltd.**

No.16, Tzuchiang St., Tucheng Industrial Park, New Taipei City 23678, Taiwan.  
Tel: 886-2-22696789 Fax: 886-2-22686682  
Email: info@fine-tek.com http://www.fine-tek.com



08-EG3XX-B1-EM,06/14/2012

