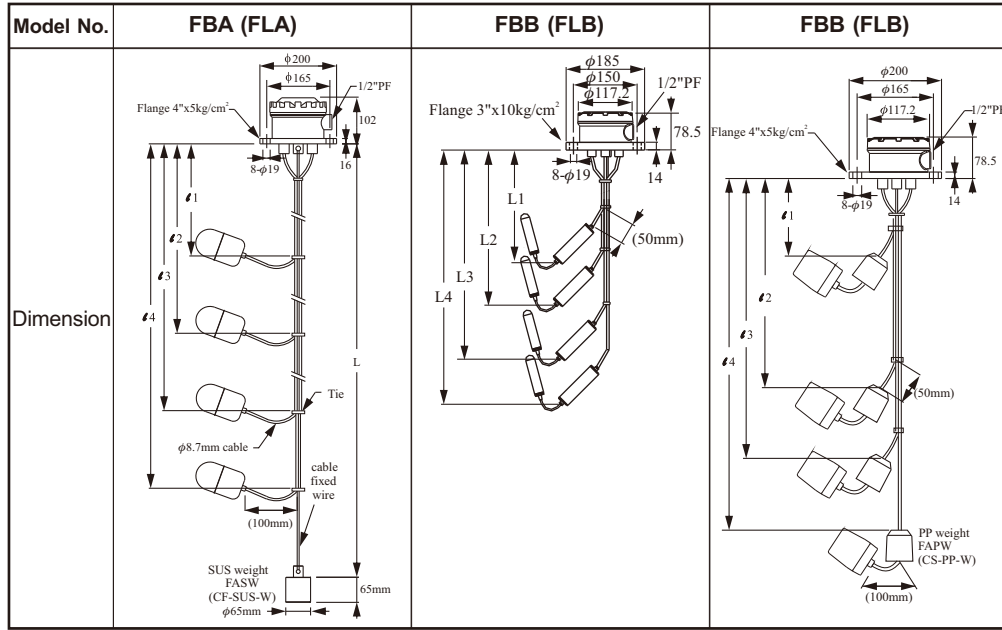
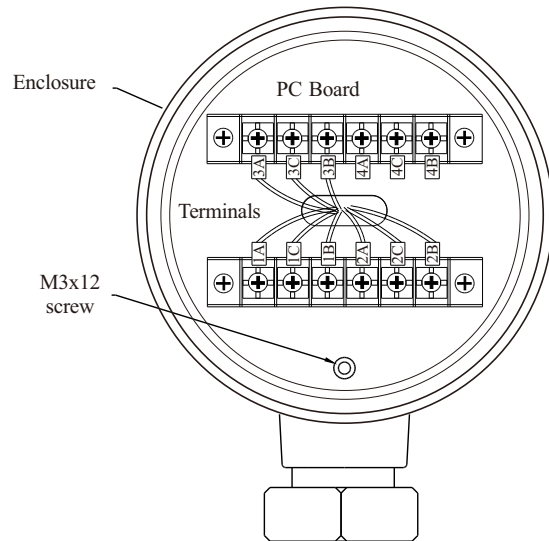


# FBX Cable Float Level Switch Operation Manual

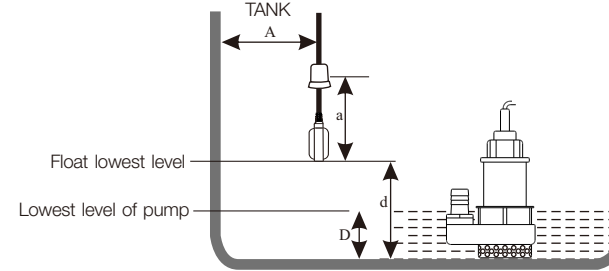


## TERMINAL DRAWING

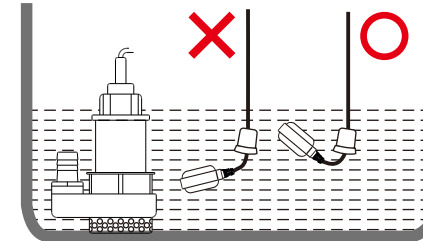


## INSTALLATION GUIDE

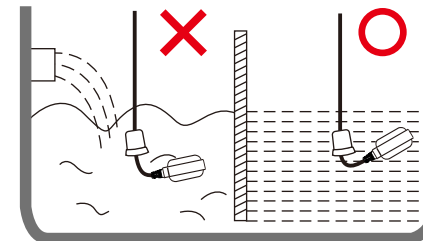
The distance from float to tank "A" must be longer than length "a". Otherwise, it is easy to act abnormally. In order to protect the pump, the lowest level of float "d" must be higher than the lowest level "D" of pump.



The float should be distant from water pump to prevent being sucked by the water pump.



The installation position should be distant from inlet to prevent the false alarm by water impact. If that cannot be avoided, please install additional devices like pipe or plate to decrease the impact.



## TROUBLE SHOOTING

Trouble	Possible Cause	Solution
When level goes down, switch remains ON	Cable broken, float got water damaged.	Check cable and float, and replace with new one.
	Water damaged,cable entry didn't face ground position or cable conduit and hosing didn't fix well.	Check and fix cable entry and housing. If found water inside the float, change with new one.
	Overload, contact damage ed.	Follow the switching capacity shown on catalogue to operate.
	Wrong wiring, abnormal function.	Check and fix terminal wiring.
	Terminals stock dust or cable bifurcated and short circuit.	Check terminals and clean dust.
	Float got stock or twined by particles.	Check float around and remove particles.
When level goes up, switch remains open circuit(OFF)	Metal fatigue, internal leads broken.	Check cable and float, and replace with new one °
	Overload,contact burned.	Follow the switching capacity shown on catalogue to operate.
	Wrong wiring, abnormal function.	Check and fix terminal wiring.
	Abnormal power supply or no turn on power supply.	Check and open power supply.
	Float got stock or twined by particles.	Check float around and remove particles.



**FineTek Co., Ltd.**

No.16, Tzuchiang St., Tucheng Industrial Park, New Taipei City 23678, Taiwan.

Tel: 886-2-22696789 Fax: 886-2-22686682

Email: info@fine-tek.com <http://www.fine-tek.com>



08-FB-B5-EM,03/16/2120

